

RT-MINI

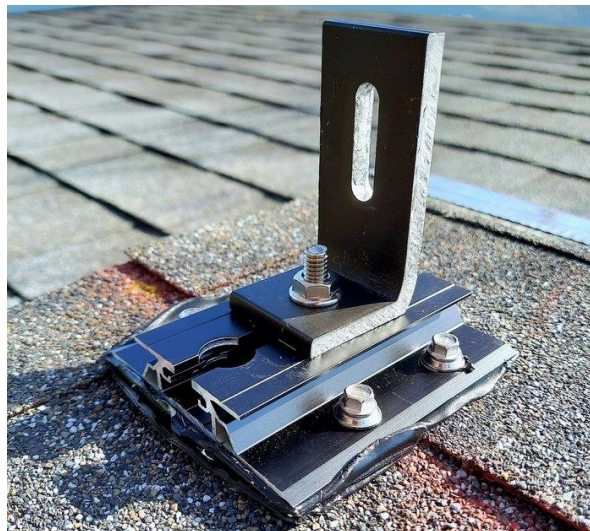
Flexible Flashing certified by the International Code Council (ICC)

The RT-MINI II With AlphaSeal™

The RT-MINI II is our most popular residential roof mount base featuring Roof Tech Inc's Self-flashing AlphaSeal™ PV Mounting Technology. The RT-MINI II is designed to attach conventional rail mounting systems for any sloped roofs consisting of metal, EPDM, TPO, and asphalt.

The RT-MINI II has more mounting options for rafters and also combining rafter and deck attachments. The optional RT 5 x 90mm stainless wood screws (rafter only) can provide a wider span, and the offset rafter mounting adds more options on any style of roof and pitch. The new design uses less aluminum, making it a more efficient design that reduces raw materials and decreases logistic expenses.

RT-MINI II is engineered to withstand wind speeds up to 180 mph and ground snow up to 90 PSF. The main difference between RT-MINI II and conventional flashing is the faster installation time because RT-MINI II is fastened with wood screws, eliminating the need for pilot holes. As a result, there is no damage to the seal on asphalt shingles. RT-MINI II is fully waterproof and certified by the International Code Council (ICC-ESR 3575). Stamped PE letters are available for 40 states in the U.S. and five provinces in Canada. The RT-MINI II is also Florida product approved for all HVHZ projects!





Components

RT2-00-MINIBK
PAT : PENDING

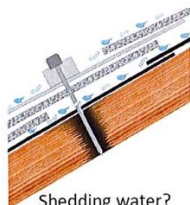


MINI base : 20 ea.
Screw : 40 ea.
Extra RT-Butyl : 10 ea.

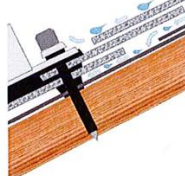
RT-Butyl is Roof Tech's flexible flashing used in 550,000 residential PV systems for the last 20 years. It is the first PV mounting system with Flexible Flashing certified by the ICC.

Metal Flashing Retrofit

Flexible Flashing



Shedding water?



100% Waterproof

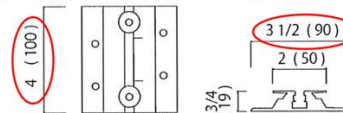
ICC ESR-3575

ASTM2140 testing

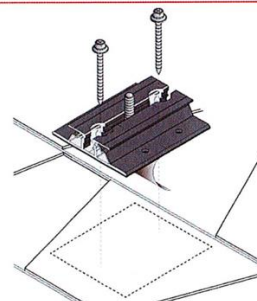
UV testing (7500 hrs.)



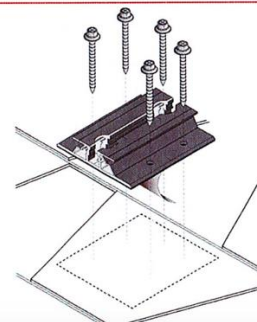
Dimensions in (mm)



Rafter installation



Deck installation



P.E. Stamped Letters available at www.roof-tech.us/support